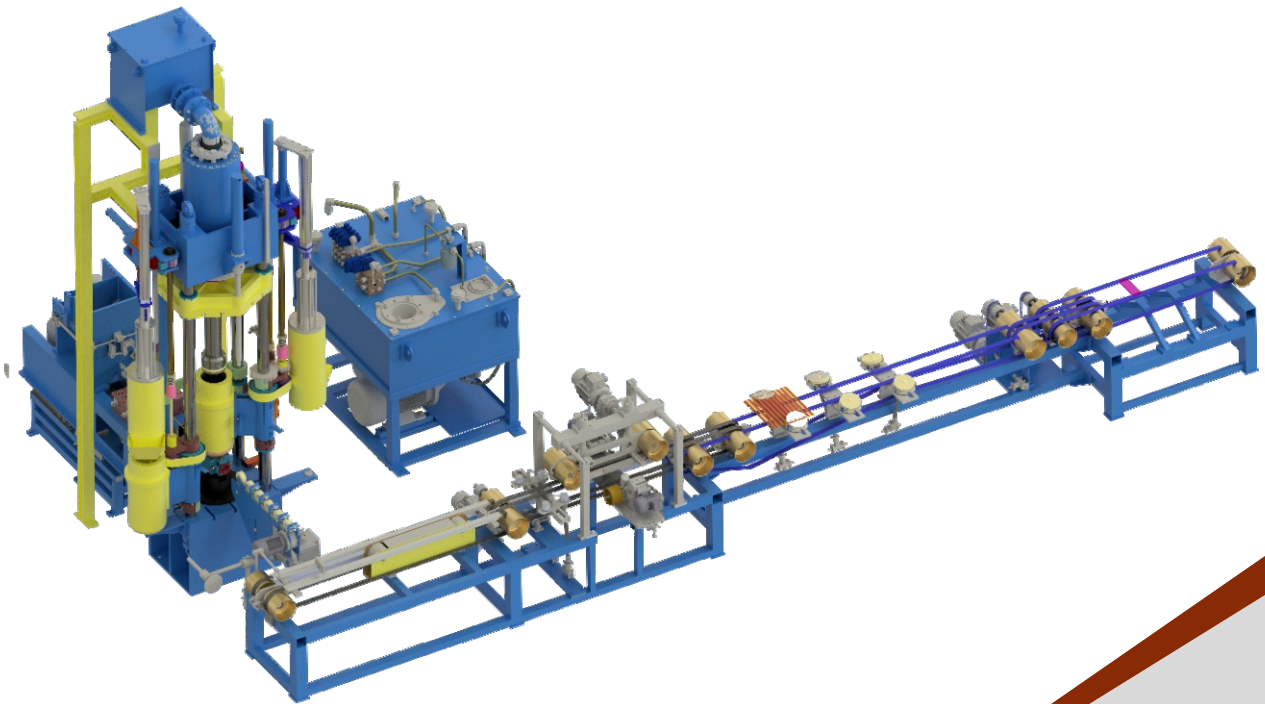


Hydraulic Press for welding electrodes

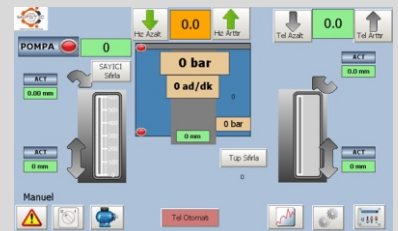
 www.mepstec.com

 info@mepstec.com

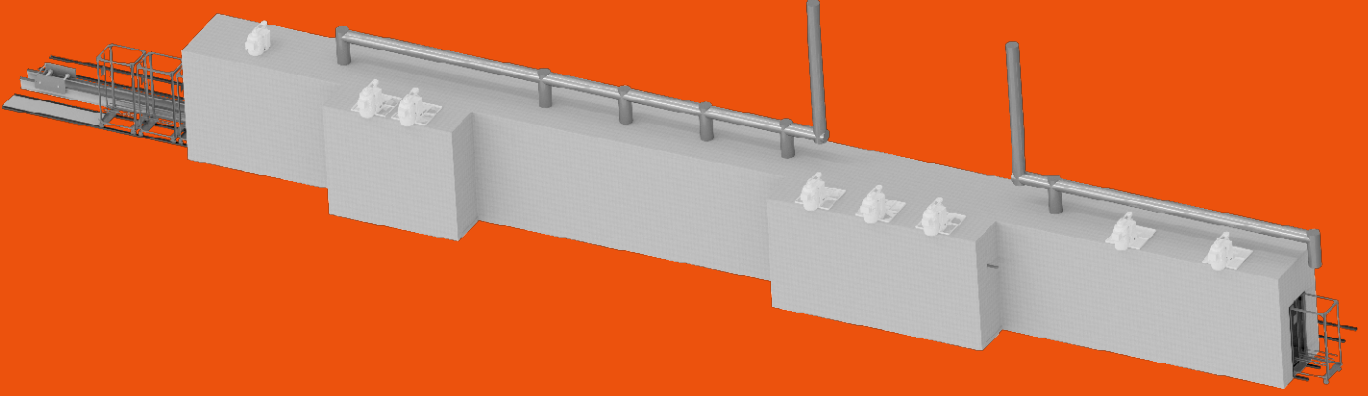


Features

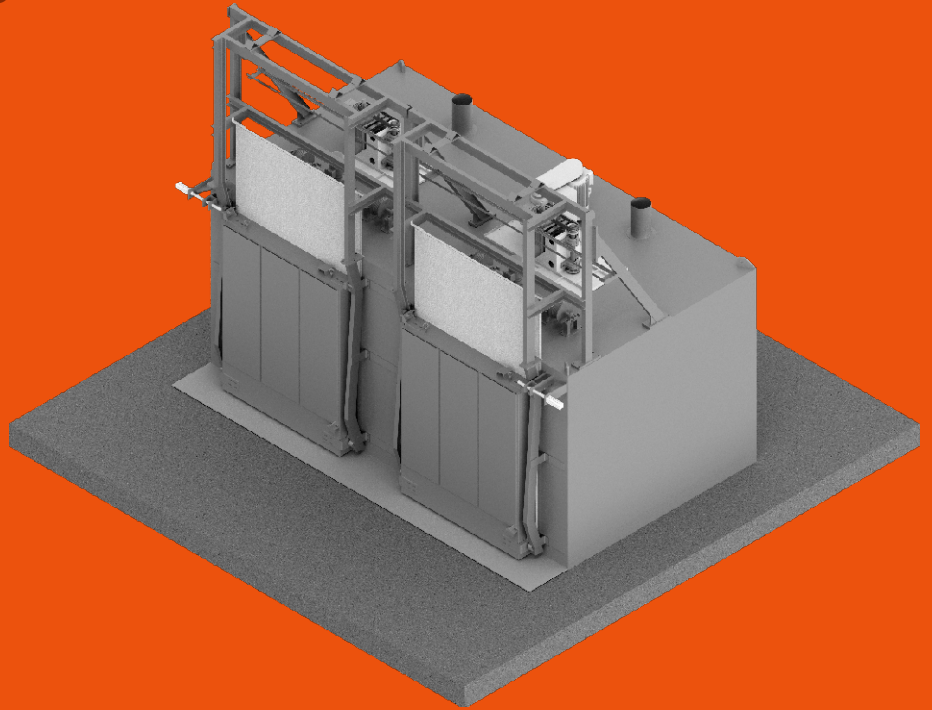
- Production speed up to 1000 pcs /minutes
- Easy job change
- High efficiency hydraulic pumps
- Eaton hydraulic valves
- Cylinder pressure up to 350 bar
- Servo controlled tube arm positioning
- 10" user friendly HMI
- Rockwell Automation servo motors and drives



Other Machines



Tunnel Furnace



Stationary Furnace